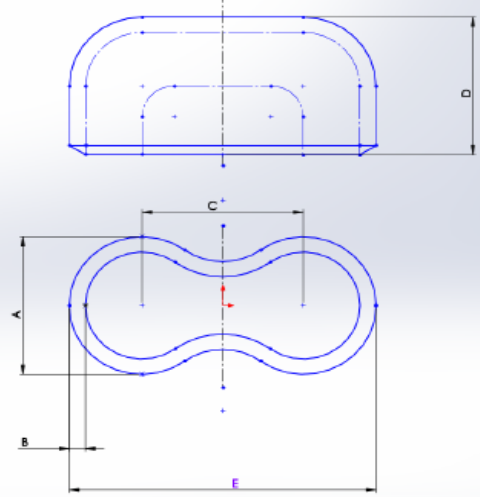
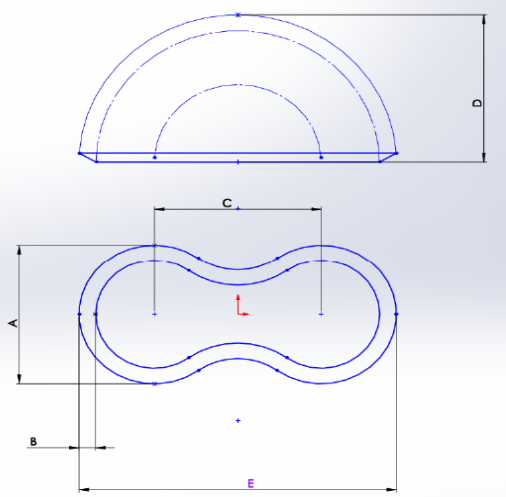


"Y" FORM CAP

"Z" FORM CAP



| A | B | FORM | D | E |
|------|----|------|----|-----|
| 38 | 6 | Y | 38 | 78 |
| 48,3 | 6 | Y | 48 | 96 |
| 48,3 | 8 | Y | 48 | 96 |
| 51 | 6 | Y | 51 | 102 |
| 60,3 | 6 | Y | 60 | 120 |
| 60,3 | 6 | Y | 60 | 120 |
| 60,3 | 8 | Y | 60 | 120 |
| 60,3 | 8 | Y | 68 | 136 |
| 60,3 | 6 | Z | 68 | 136 |
| 60,3 | 6 | Z | 68 | 136 |
| 60,3 | 10 | Y | 60 | 120 |
| 60,3 | 8 | Z | 60 | 120 |
| 60,3 | 10 | Z | 60 | 120 |
| 60,3 | 6 | Y | 60 | 130 |
| 60,3 | 8 | Y | 60 | 130 |
| 60,3 | 6 | Y | 60 | 140 |
| 60,3 | 10 | Y | 60 | 130 |
| 60,3 | 8 | Y | 60 | 130 |
| 60,3 | 10 | Y | 60 | 130 |
| 70 | 10 | Y | 70 | 140 |
| 70 | 10 | Z | 70 | 140 |
| 70 | 12 | Z | 70 | 140 |
| 70 | 12 | Y | 70 | 140 |
| 73 | 6 | Z | 73 | 146 |
| 73 | 8 | Y | 74 | 146 |
| 73 | 8 | Z | 74 | 146 |
| 73 | 10 | Y | 74 | 146 |
| 73 | 10 | Z | 74 | 146 |
| 73 | 12 | Y | 74 | 146 |
| 73 | 12 | Y | 73 | 146 |
| 73 | 12 | Z | 74 | 146 |
| 73 | 8 | Y | 74 | 158 |
| 73 | 10 | Y | 74 | 158 |
| 73 | 10 | Z | 74 | 158 |
| 73 | 8 | Y | 74 | 163 |
| 73 | 10 | Y | 80 | 163 |
| 73 | 12 | Y | 80 | 163 |
| 76 | 6 | Y | 76 | 152 |
| 76 | 8 | Z | 76 | 152 |
| 76 | 8 | Y | 76 | 152 |
| 76 | 10 | Z | 76 | 152 |
| 76 | 10 | Y | 76 | 152 |

| A | B | FORM | D | E |
|------|----|------|------|-----|
| 76 | 10 | Y | 76 | 172 |
| 76 | 8 | Y | 76 | 162 |
| 76 | 10 | Y | 76 | 162 |
| 76 | 8 | Y | 76 | 172 |
| 76 | 10 | Y | 76 | 172 |
| 76 | 12 | Y | 76 | 172 |
| 76 | 12 | Z | 76 | 152 |
| 76 | 12 | Y | 76 | 152 |
| 76 | 8 | Z | 76 | 172 |
| 76 | 8 | Y | 76 | 172 |
| 76 | 8 | Y | 76 | 162 |
| 76 | 10 | Y | 76 | 172 |
| 76 | 10 | Z | 76 | 172 |
| 76 | 10 | Z | 76 | 172 |
| 82,5 | 8 | Y | 83 | 165 |
| 82,5 | 10 | Y | 83 | 165 |
| 82,5 | 12 | Y | 83 | 165 |
| 82,5 | 12 | Y | 82,5 | 165 |
| 82,5 | 10 | Y | 83 | 175 |
| 82,5 | 12 | Y | 83 | 175 |
| 82,5 | 8 | Y | 83 | 185 |
| 82,5 | 10 | Y | 83 | 185 |
| 82,5 | 12 | Y | 83 | 185 |
| 82,5 | 14 | Y | 83 | 185 |
| 82,5 | 14 | Y | 83 | 185 |
| 88,9 | 8 | Y | 90 | 180 |
| 88,9 | 8 | Z | 90 | 180 |
| 88,9 | 10 | Y | 90 | 180 |
| 88,9 | 10 | Z | 90 | 180 |
| 88,9 | 12 | Y | 90 | 180 |
| 88,9 | 12 | Z | 90 | 180 |
| 88,9 | 8 | Y | 90 | 190 |
| 88,9 | 8 | Z | 90 | 190 |
| 88,9 | 10 | Y | 90 | 190 |
| 88,9 | 10 | Z | 90 | 190 |
| 88,9 | 12 | Y | 90 | 190 |
| 88,9 | 12 | Z | 90 | 190 |
| 88,9 | 8 | Y | 90 | 200 |
| 88,9 | 8 | Z | 90 | 200 |
| 88,9 | 10 | Y | 90 | 200 |
| 88,9 | 10 | Z | 90 | 200 |
| 88,9 | 12 | Y | 90 | 200 |
| 88,9 | 12 | Z | 90 | 200 |

ELBOWS

| Ø | | THICKNESS | Radius |
|------|----|------------|--------|
| 90 | SR | 8,10,12,14 | 76 |
| 90 | LR | 8,10,12,14 | 114 |
| 82,5 | SR | 8,10,12,14 | 70 |
| 82,5 | LR | 8,10,12,14 | 107 |
| 76 | SR | 8,10,12 | 65 |
| 76 | LR | 8,10,12 | 98 |

| Ø | | THICKNESS | Radius |
|----|----|-----------|--------|
| 73 | SR | 8,10,12 | 63 |
| 73 | LR | 8,10,12 | 95 |
| 70 | SR | 8,10,12 | 59 |
| 70 | LR | 8,10,12 | 90 |
| 60 | SR | 6,8,10 | 51 |
| 60 | LR | 6,8,10 | 76 |